

**TURKISH KRAFT**



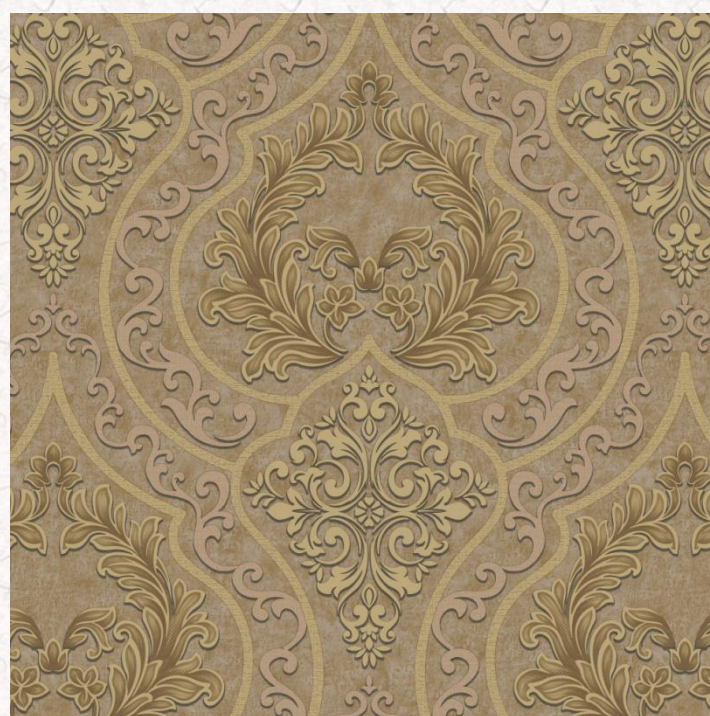
## TURKISH KRAFT

ELEGANCE IS COMING OUT NOT ONLY WHEN FEMININE ELEMENTS SUCH AS TONE-DOWN PINK OR GOLD COLOR,ETC. ARE MIXED.ELEGANCE IS MELTED IN A CLASSICAL ITEM WITH A SIMPLE DESIGN AND CLEAR LINE,AND IT HAPPENS FINGER-MARKED VINTAGES WOULD RATHER CREATE IN-DEPTH ELEGANCE.

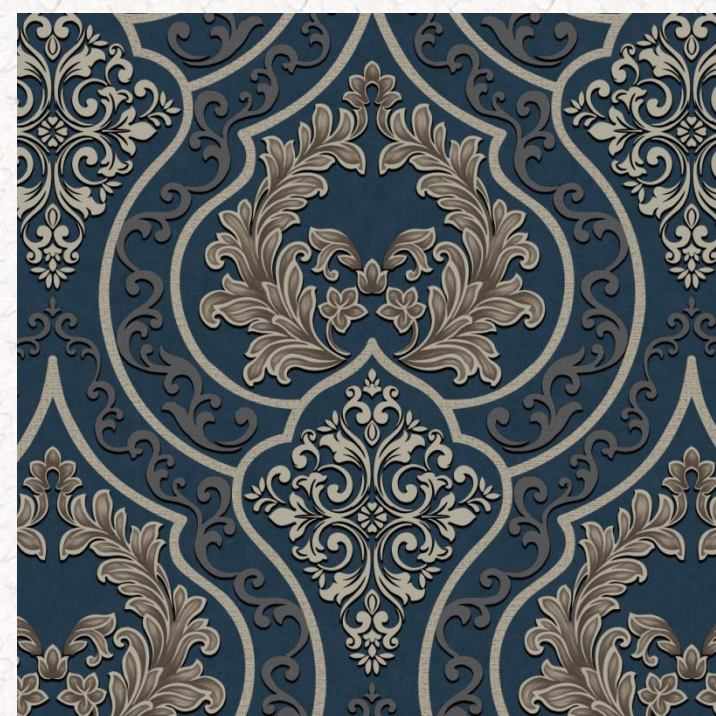
MADE BY TURKISH DESIGNER' S



41001



41004



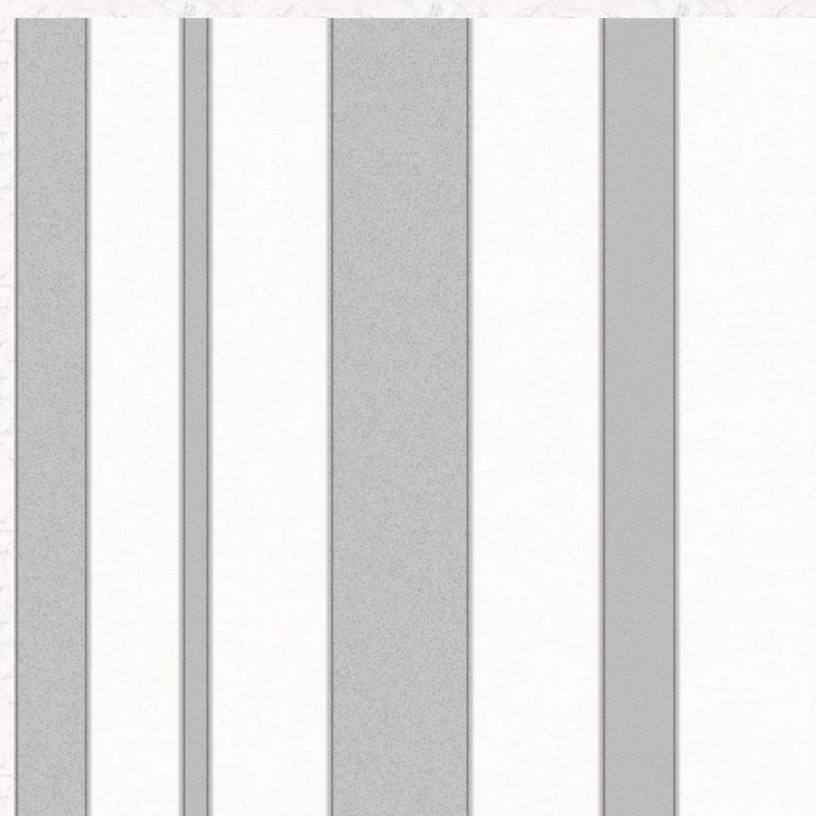
41006



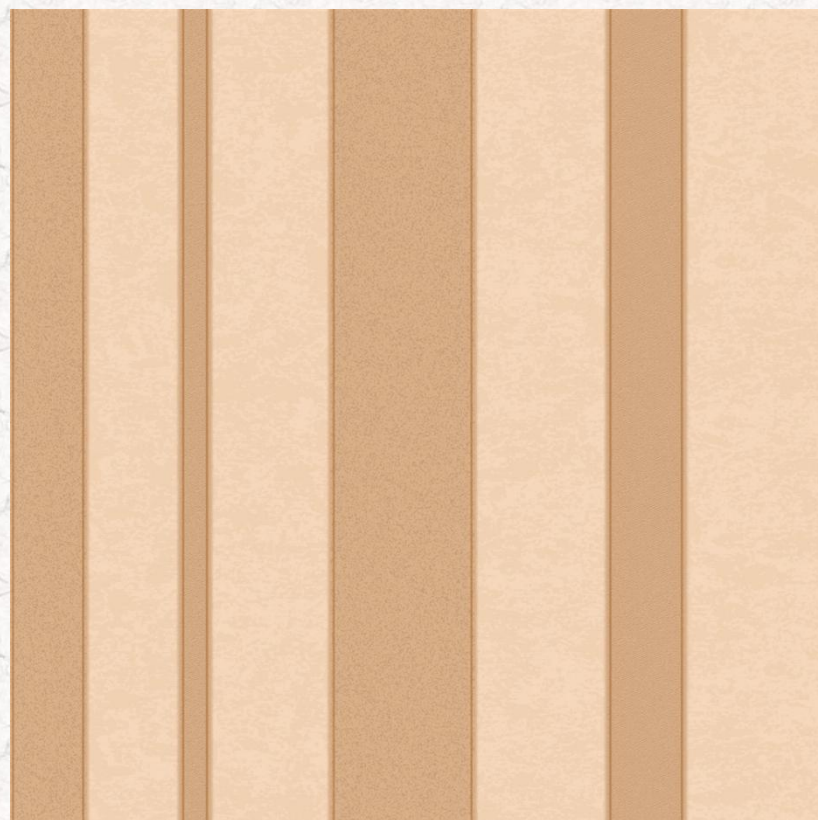
## TURKISH KRAFT

ELEGANCE IS COMING OUT NOT ONLY WHEN FEMININE ELEMENTS SUCH AS TONE-DOWN PINK OR GOLD COLOR,ETC. ARE MIXED.ELEGANCE IS MELTED IN A CLASSICAL ITEM WITH A SIMPLE DESIGN AND CLEAR LINE,AND IT HAPPENS FINGER-MARKED VINTAGES WOULD RATHER CREATE IN-DEPTH ELEGANCE.

MADE BY TURKISH DESIGNER' S



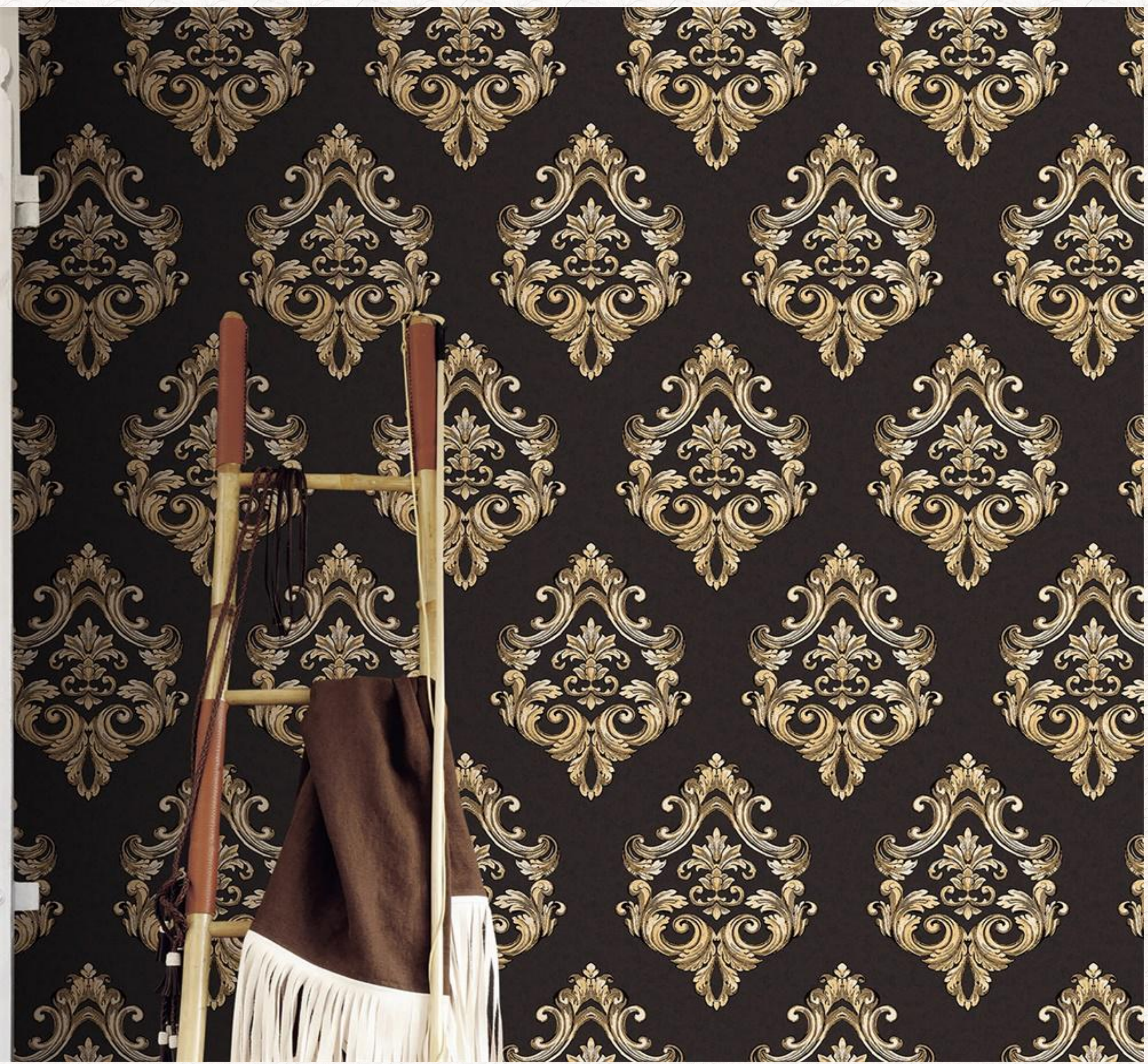
41002



41003



41005



## TURKISH KRAFT

ELEGANCE IS COMING OUT NOT ONLY WHEN FEMININE ELEMENTS SUCH AS TONE-DOWN PINK OR GOLD COLOR,ETC. ARE MIXED.ELEGANCE IS MELTED IN A CLASSICAL ITEM WITH A SIMPLE DESIGN AND CLEAR LINE,AND IT HAPPENS FINGER-MARKED VINTAGES WOULD RATHER CREATE IN-DEPTH ELEGANCE.

MADE BY TURKISH DESIGNER' S



41007



## TURKISH KRAFT

ELEGANCE IS COMING OUT NOT ONLY WHEN FEMININE ELEMENTS SUCH AS TONE-DOWN PINK OR GOLD COLOR,ETC. ARE MIXED.ELEGANCE IS MELTED IN A CLASSICAL ITEM WITH A SIMPLE DESIGN AND CLEAR LINE,AND IT HAPPENS FINGER-MARKED VINTAGES WOULD RATHER CREATE IN-DEPTH ELEGANCE.

MADE BY TURKISH DESIGNER' S



41008



41009



41010



## TURKISH KRAFT

ELEGANCE IS COMING OUT NOT ONLY WHEN FEMININE ELEMENTS SUCH AS TONE-DOWN PINK OR GOLD COLOR,ETC. ARE MIXED.ELEGANCE IS MELTED IN A CLASSICAL ITEM WITH A SIMPLE DESIGN AND CLEAR LINE,AND IT HAPPENS FINGER-MARKED VINTAGES WOULD RATHER CREATE IN-DEPTH ELEGANCE.

MADE BY TURKISH DESIGNER' S



41013



41011



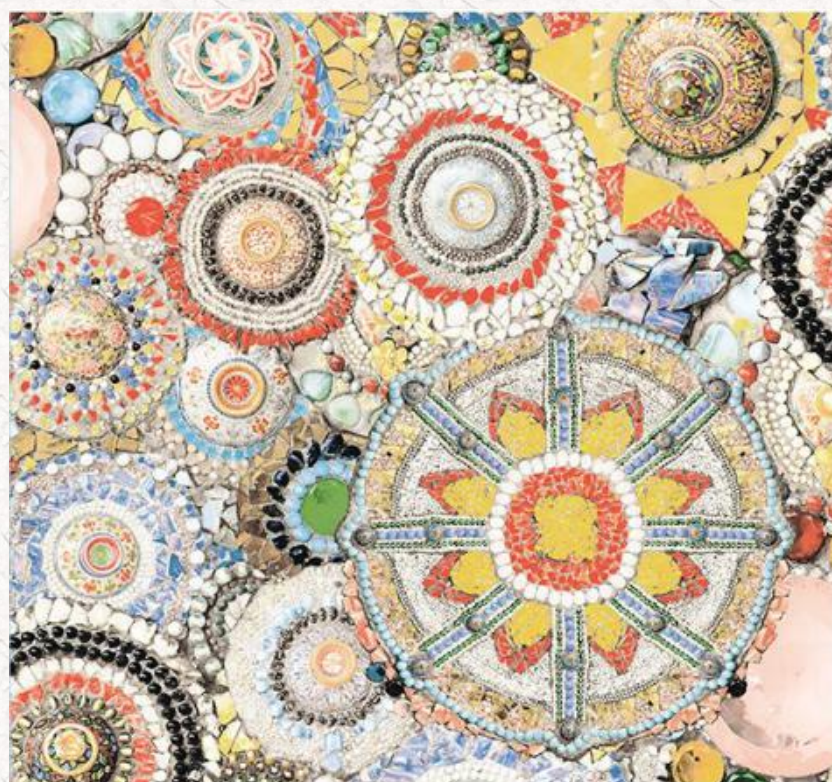
41012



## TURKISH KRAFT

ELEGANCE IS COMING OUT NOT ONLY WHEN FEMININE ELEMENTS SUCH AS TONE-DOWN PINK OR GOLD COLOR, ETC. ARE MIXED. ELEGANCE IS MELTED IN A CLASSICAL ITEM WITH A SIMPLE DESIGN AND CLEAR LINE, AND IT HAPPENS FINGER-MARKED VINTAGES WOULD RATHER CREATE IN-DEPTH ELEGANCE.

MADE BY TURKISH DESIGNER'S



41015



## TURKISH KRAFT

ELEGANCE IS COMING OUT NOT ONLY WHEN FEMININE ELEMENTS SUCH AS TONE-DOWN PINK OR GOLD COLOR,ETC. ARE MIXED.ELEGANCE IS MELTED IN A CLASSICAL ITEM WITH A SIMPLE DESIGN AND CLEAR LINE,AND IT HAPPENS FINGER-MARKED VINTAGES WOULD RATHER CREATE IN-DEPTH ELEGANCE.

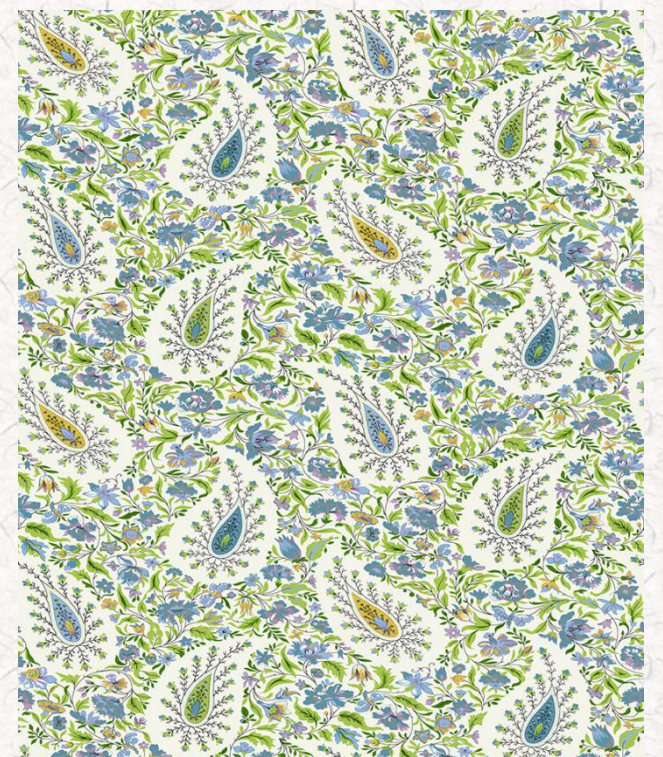
MADE BY TURKISH DESIGNER' S



41017



41016



41018





## TURKISH KRAFT

ELEGANCE IS COMING OUT NOT ONLY WHEN FEMININE ELEMENTS SUCH AS TONE-DOWN PINK OR GOLD COLOR, ETC. ARE MIXED. ELEGANCE IS MELTED IN A CLASSICAL ITEM WITH A SIMPLE DESIGN AND CLEAR LINE, AND IT HAPPENS FINGER-MARKED VINTAGES WOULD RATHER CREATE IN-DEPTH ELEGANCE.

MADE BY TURKISH DESIGNER'S



41019



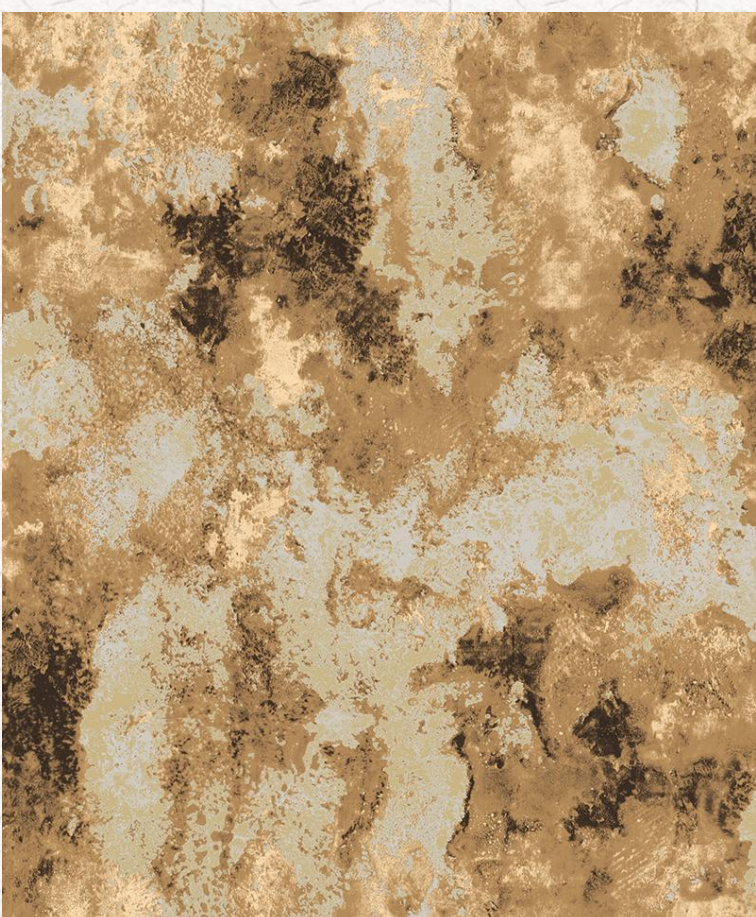
41020



## TURKISH KRAFT

ELEGANCE IS COMING OUT NOT ONLY WHEN FEMININE ELEMENTS SUCH AS TONE-DOWN PINK OR GOLD COLOR,ETC. ARE MIXED.ELEGANCE IS MELTED IN A CLASSICAL ITEM WITH A SIMPLE DESIGN AND CLEAR LINE,AND IT HAPPENS FINGER-MARKED VINTAGES WOULD RATHER CREATE IN-DEPTH ELEGANCE.

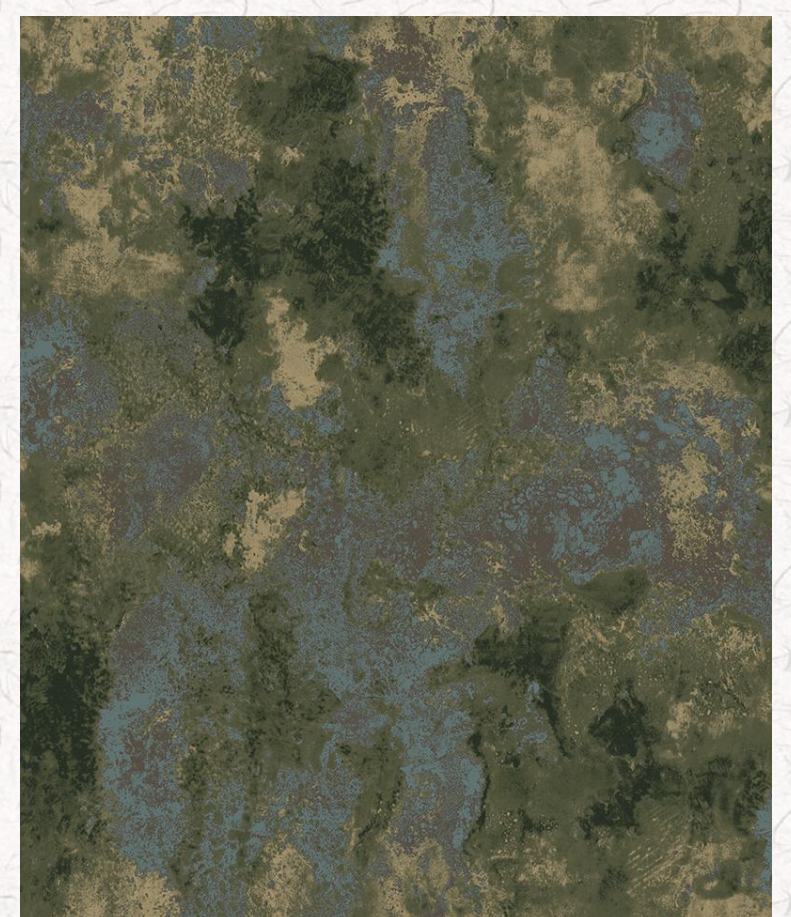
MADE BY TURKISH DESIGNER' S



41023



41021



41022



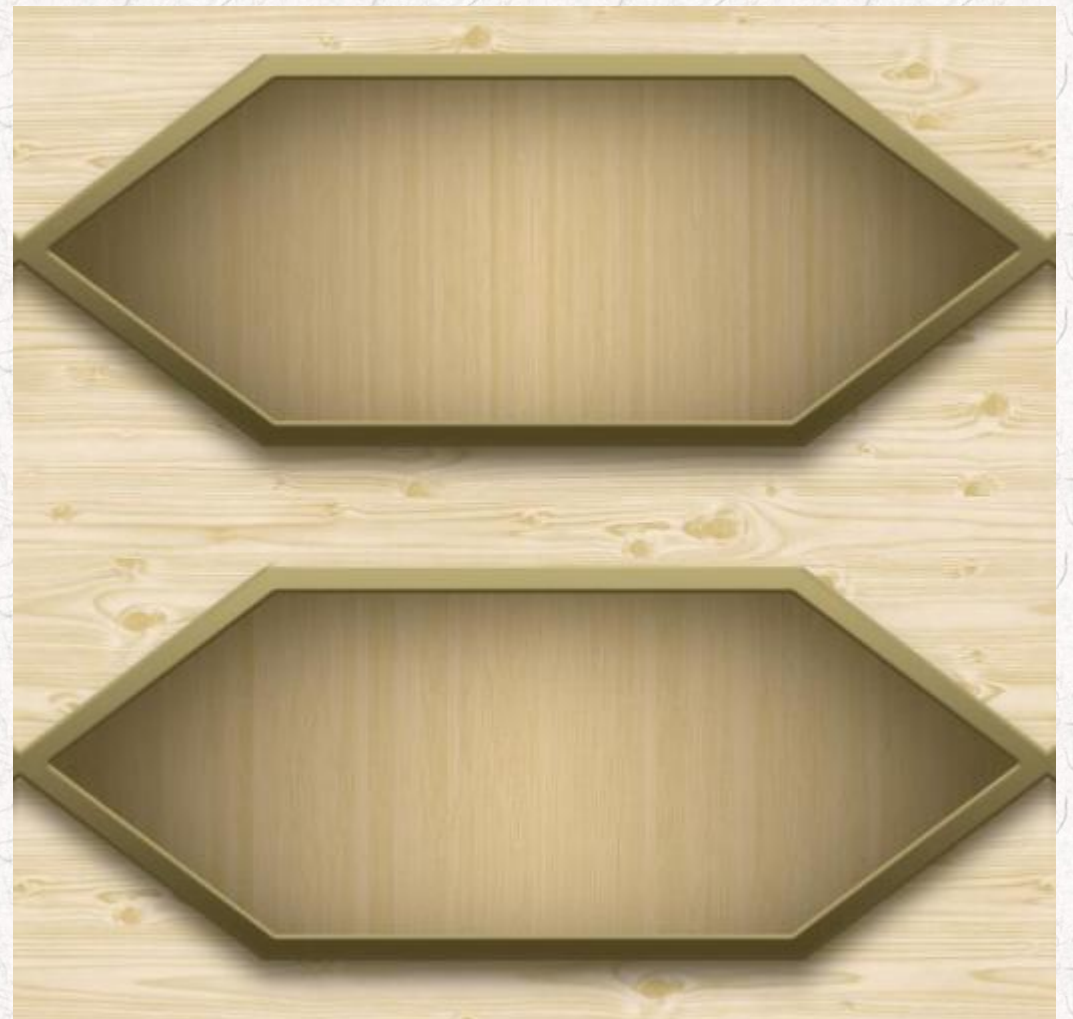
## TURKISH KRAFT

ELEGANCE IS COMING OUT NOT ONLY WHEN FEMININE ELEMENTS SUCH AS TONE-DOWN PINK OR GOLD COLOR,ETC. ARE MIXED.ELEGANCE IS MELTED IN A CLASSICAL ITEM WITH A SIMPLE DESIGN AND CLEAR LINE,AND IT HAPPENS FINGER-MARKED VINTAGES WOULD RATHER CREATE IN-DEPTH ELEGANCE.

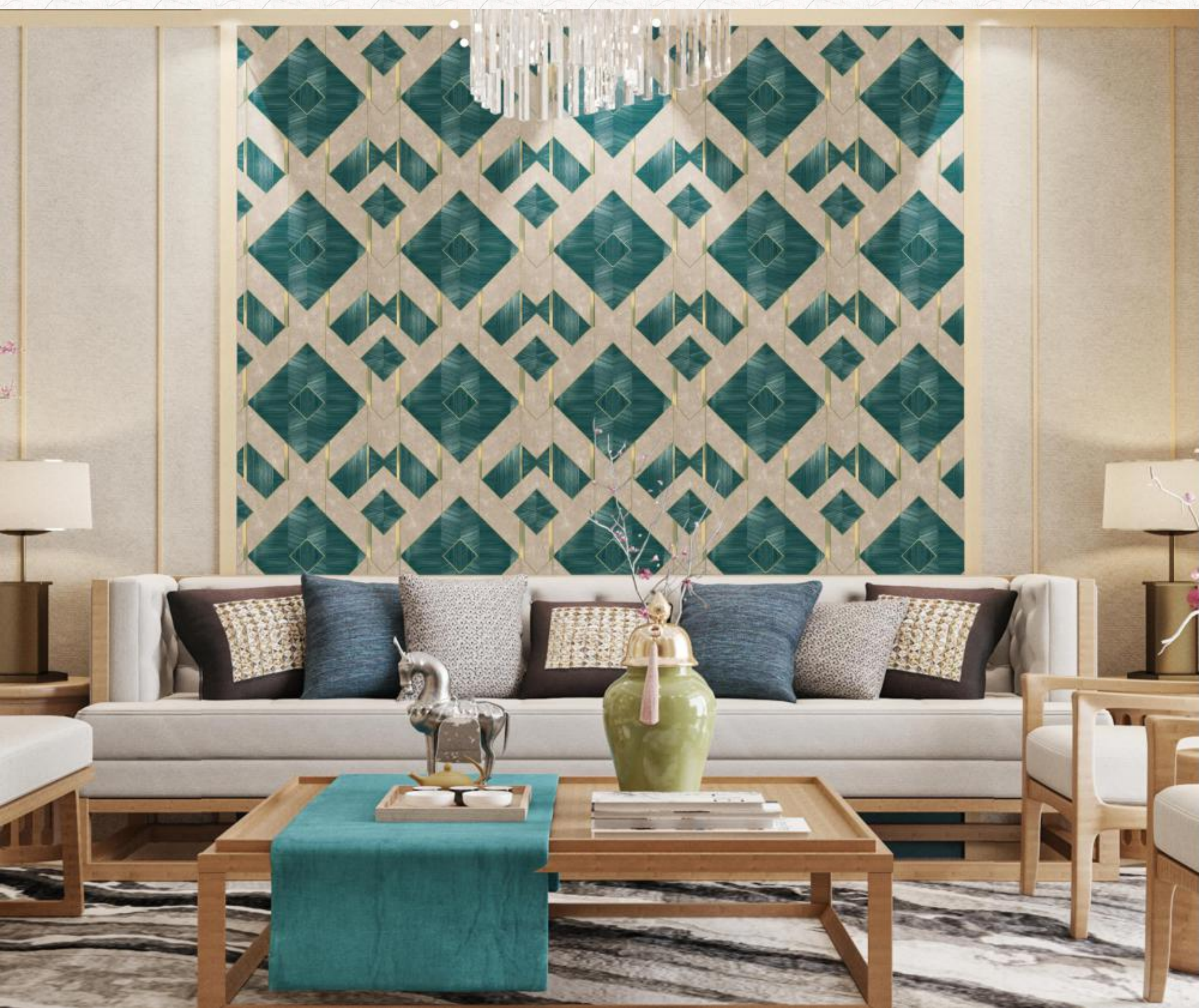
MADE BY TURKISH DESIGNER' S



41026



41027



## TURKISH KRAFT

ELEGANCE IS COMING OUT NOT ONLY WHEN FEMININE ELEMENTS SUCH AS TONE-DOWN PINK OR GOLD COLOR, ETC. ARE MIXED. ELEGANCE IS MELTED IN A CLASSICAL ITEM WITH A SIMPLE DESIGN AND CLEAR LINE, AND IT HAPPENS FINGER-MARKED VINTAGES WOULD RATHER CREATE IN-DEPTH ELEGANCE.

MADE BY TURKISH DESIGNER'S



41030



41028



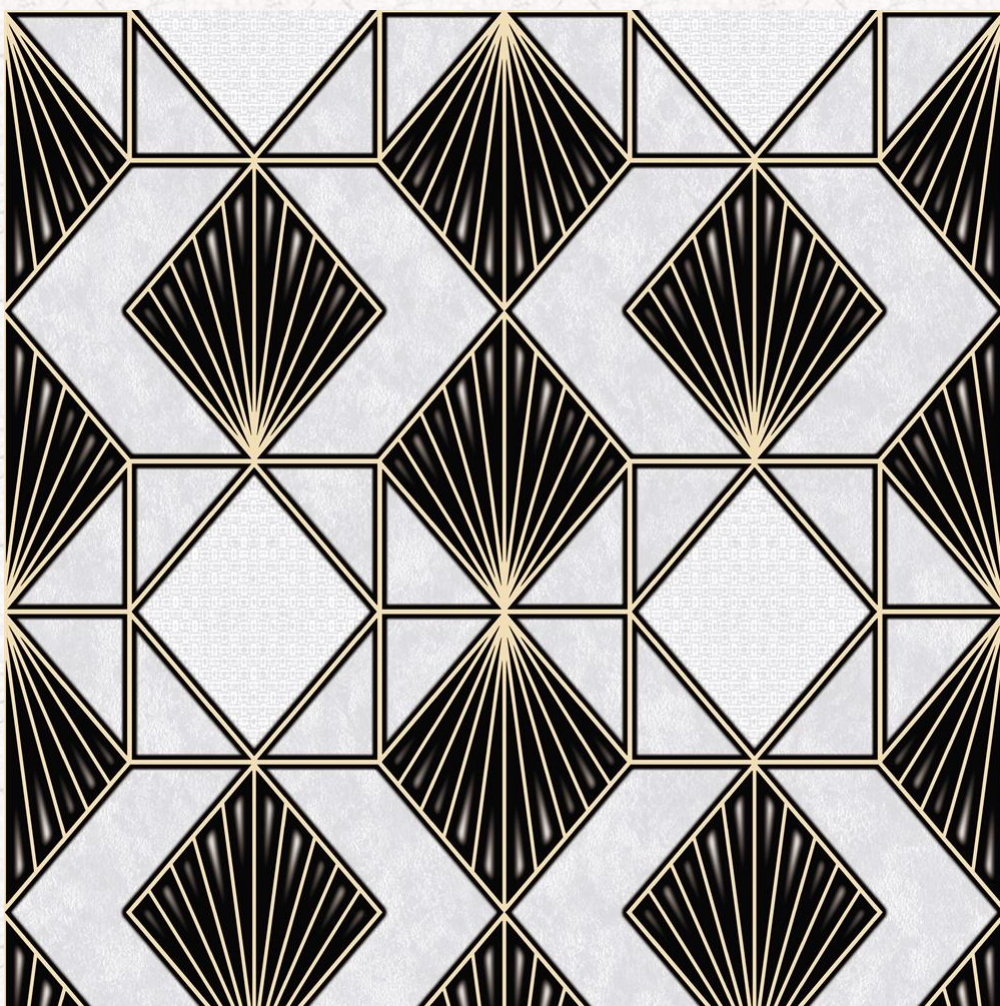
41029



## TURKISH KRAFT

ELEGANCE IS COMING OUT NOT ONLY WHEN FEMININE ELEMENTS SUCH AS TONE-DOWN PINK OR GOLD COLOR,ETC. ARE MIXED.ELEGANCE IS MELTED IN A CLASSICAL ITEM WITH A SIMPLE DESIGN AND CLEAR LINE,AND IT HAPPENS FINGER-MARKED VINTAGES WOULD RATHER CREATE IN-DEPTH ELEGANCE.

MADE BY TURKISH DESIGNER' S



41031



41032



## TURKISH KRAFT

ELEGANCE IS COMING OUT NOT ONLY WHEN FEMININE ELEMENTS SUCH AS TONE-DOWN PINK OR GOLD COLOR,ETC. ARE MIXED.ELEGANCE IS MELTED IN A CLASSICAL ITEM WITH A SIMPLE DESIGN AND CLEAR LINE,AND IT HAPPENS FINGER-MARKED VINTAGES WOULD RATHER CREATE IN-DEPTH ELEGANCE.

MADE BY TURKISH DESIGNER' S



41025



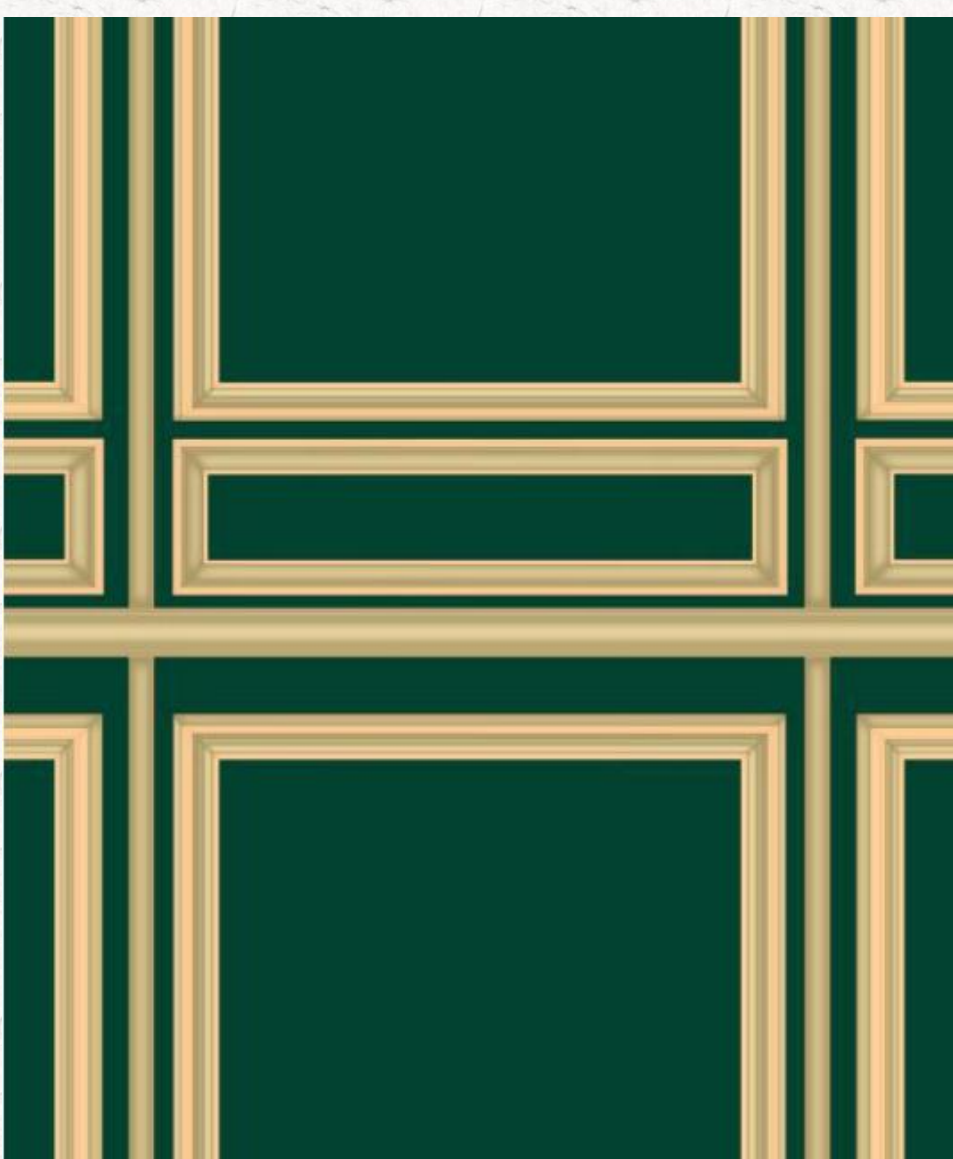
41024



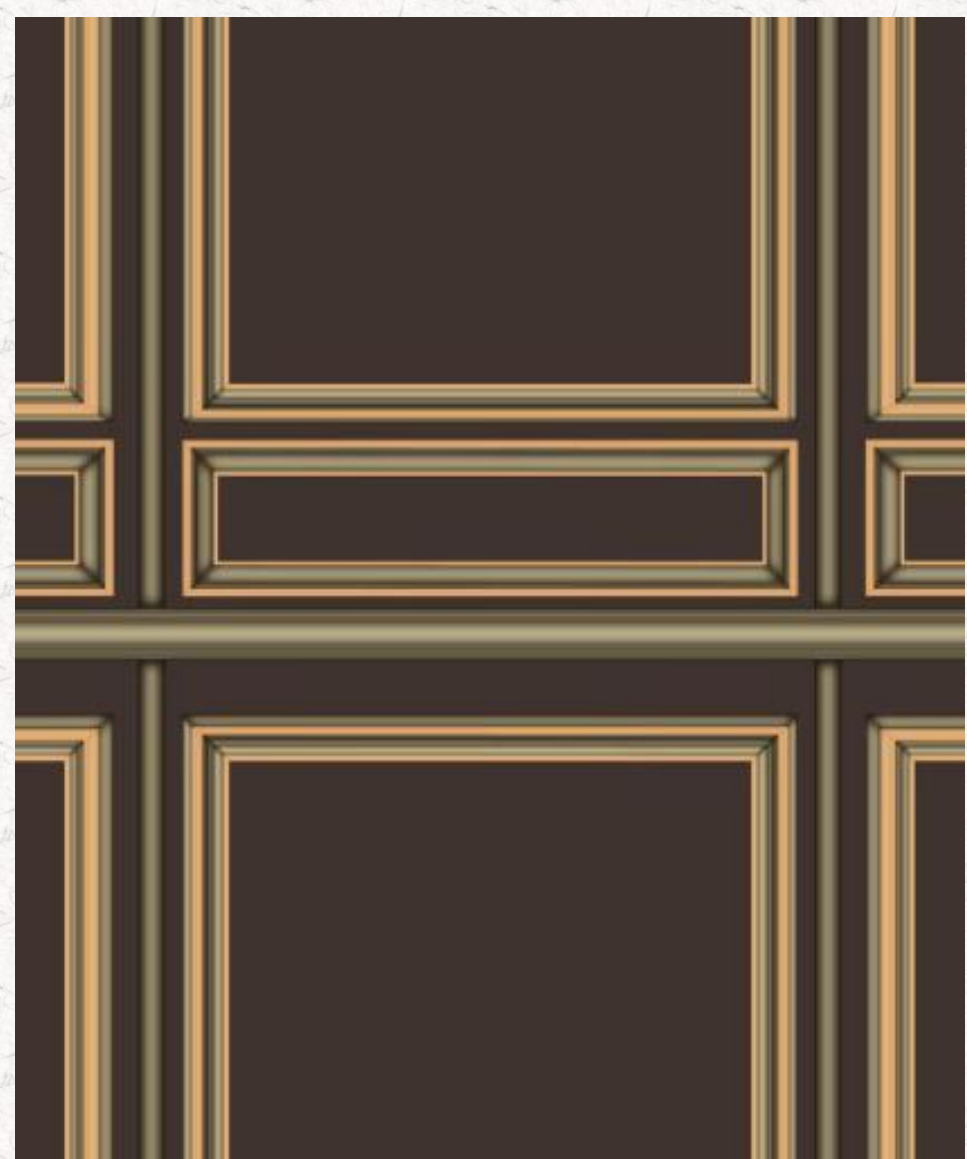
## TURKISH KRAFT

ELEGANCE IS COMING OUT NOT ONLY WHEN FEMININE ELEMENTS SUCH AS TONE-DOWN PINK OR GOLD COLOR, ETC. ARE MIXED. ELEGANCE IS MELTED IN A CLASSICAL ITEM WITH A SIMPLE DESIGN AND CLEAR LINE, AND IT HAPPENS FINGER-MARKED VINTAGES WOULD RATHER CREATE IN-DEPTH ELEGANCE.

MADE BY 'TURKISH DESIGNER' S



41048



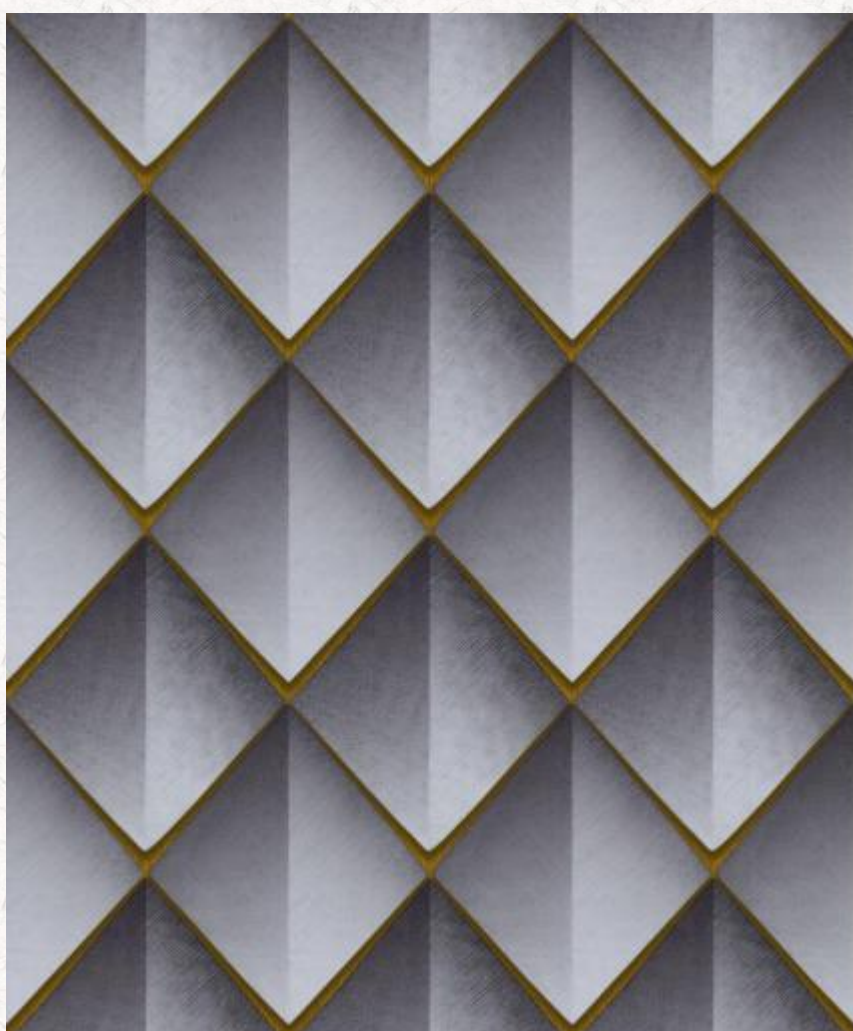
41047



## TURKISH KRAFT

ELEGANCE IS COMING OUT NOT ONLY WHEN FEMININE ELEMENTS SUCH AS TONE-DOWN PINK OR GOLD COLOR, ETC. ARE MIXED. ELEGANCE IS MELTED IN A CLASSICAL ITEM WITH A SIMPLE DESIGN AND CLEAR LINE, AND IT HAPPENS FINGER-MARKED VINTAGES WOULD RATHER CREATE IN-DEPTH ELEGANCE.

MADE BY TURKISH DESIGNER' S

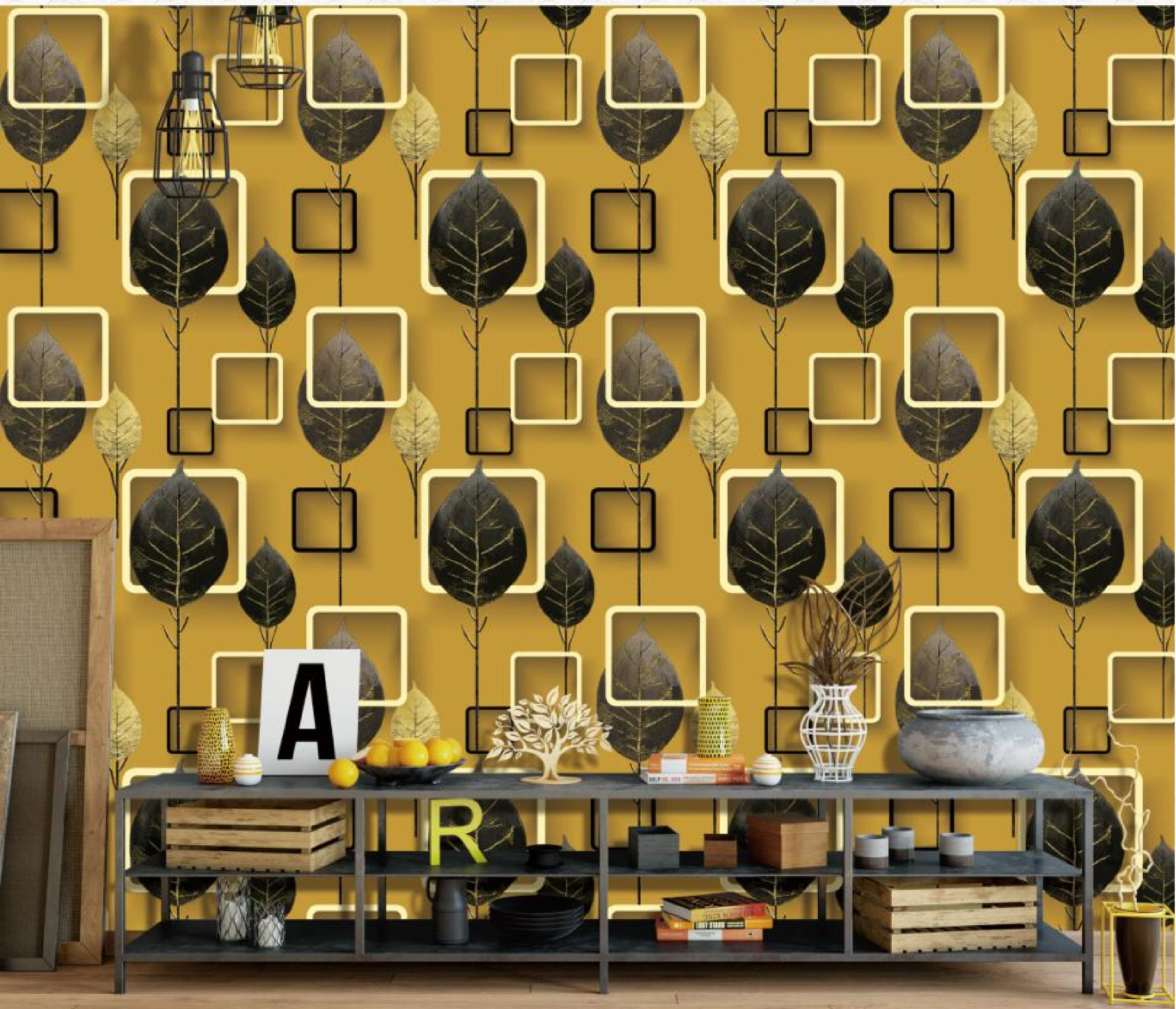


41033



41034





## TURKISH KRAFT

ELEGANCE IS COMING OUT NOT ONLY WHEN FEMININE ELEMENTS SUCH AS TONE-DOWN PINK OR GOLD COLOR, ETC. ARE MIXED. ELEGANCE IS MELTED IN A CLASSICAL ITEM WITH A SIMPLE DESIGN AND CLEAR LINE, AND IT HAPPENS FINGER-MARKED VINTAGES WOULD RATHER CREATE IN-DEPTH ELEGANCE.

MADE BY 'TURKISH DESIGNER' S



41035



41037



## TURKISH KRAFT

ELEGANCE IS COMING OUT NOT ONLY WHEN FEMININE ELEMENTS SUCH AS TONE-DOWN PINK OR GOLD COLOR, ETC. ARE MIXED. ELEGANCE IS MELTED IN A CLASSICAL ITEM WITH A SIMPLE DESIGN AND CLEAR LINE, AND IT HAPPENS FINGER-MARKED VINTAGES WOULD RATHER CREATE IN-DEPTH ELEGANCE.

MADE BY TURKISH DESIGNER'S



41036



41038



## TURKISH KRAFT

ELEGANCE IS COMING OUT NOT ONLY WHEN FEMININE ELEMENTS SUCH AS TONE-DOWN PINK OR GOLD COLOR,ETC. ARE MIXED.ELEGANCE IS MELTED IN A CLASSICAL ITEM WITH A SIMPLE DESIGN AND CLEAR LINE,AND IT HAPPENS FINGER-MARKED VINTAGES WOULD RATHER CREATE IN-DEPTH ELEGANCE.

MADE BY TURKISH DESIGNER' S



41042



41043



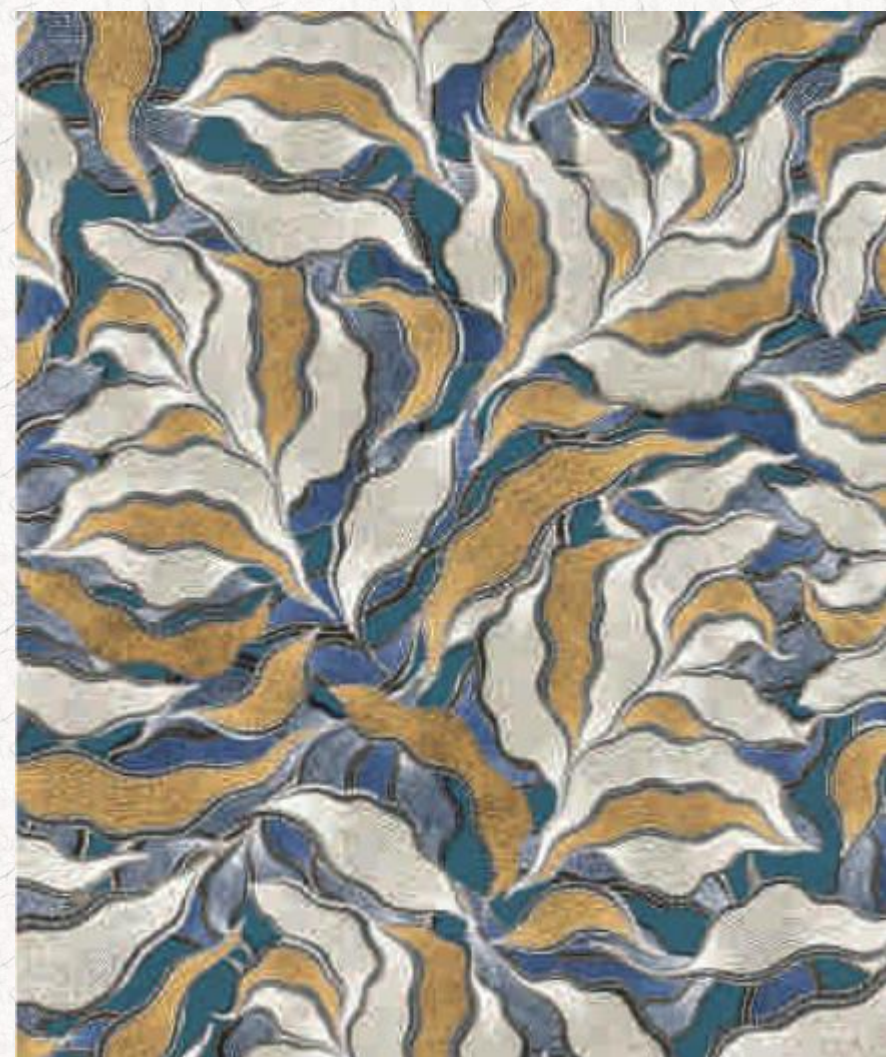
## TURKISH KRAFT

ELEGANCE IS COMING OUT NOT ONLY WHEN FEMININE ELEMENTS SUCH AS TONE-DOWN PINK OR GOLD COLOR, ETC. ARE MIXED. ELEGANCE IS MELTED IN A CLASSICAL ITEM WITH A SIMPLE DESIGN AND CLEAR LINE, AND IT HAPPENS FINGER-MARKED VINTAGES WOULD RATHER CREATE IN-DEPTH ELEGANCE.

MADE BY TURKISH DESIGNER' S



41045



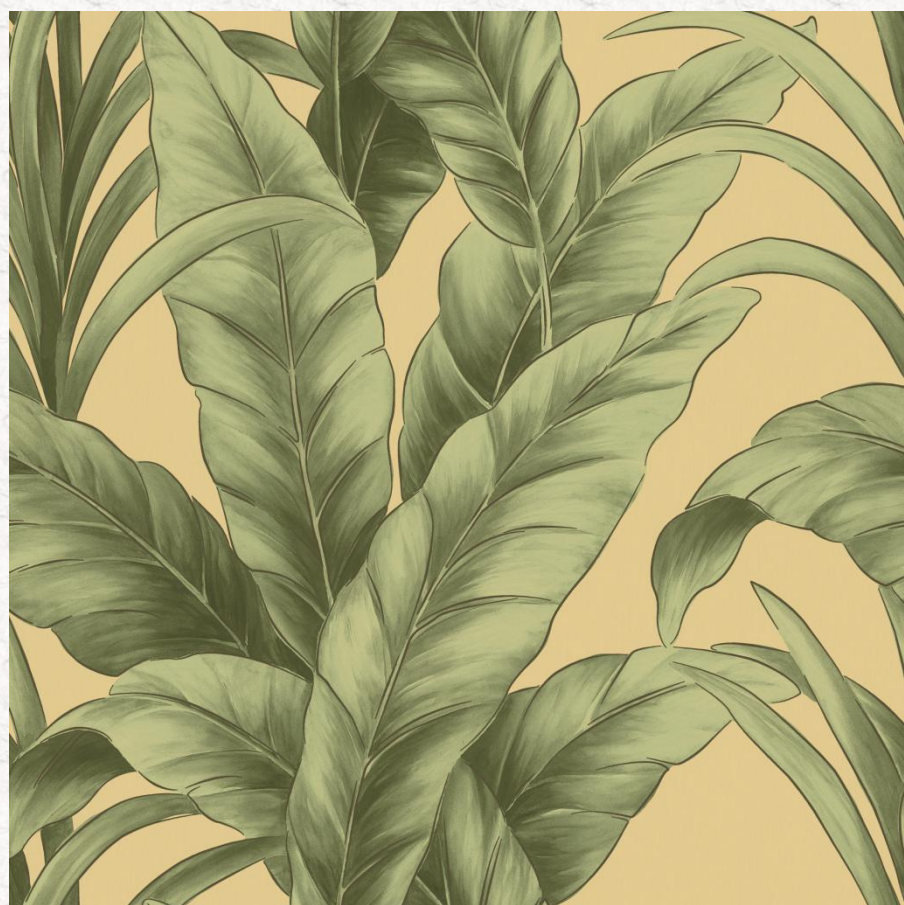
41044



## TURKISH KRAFT

ELEGANCE IS COMING OUT NOT ONLY WHEN FEMININE ELEMENTS SUCH AS TONE-DOWN PINK OR GOLD COLOR,ETC. ARE MIXED.ELEGANCE IS MELTED IN A CLASSICAL ITEM WITH A SIMPLE DESIGN AND CLEAR LINE,AND IT HAPPENS FINGER-MARKED VINTAGES WOULD RATHER CREATE IN-DEPTH ELEGANCE.

MADE BY TURKISH DESIGNER' S



41046



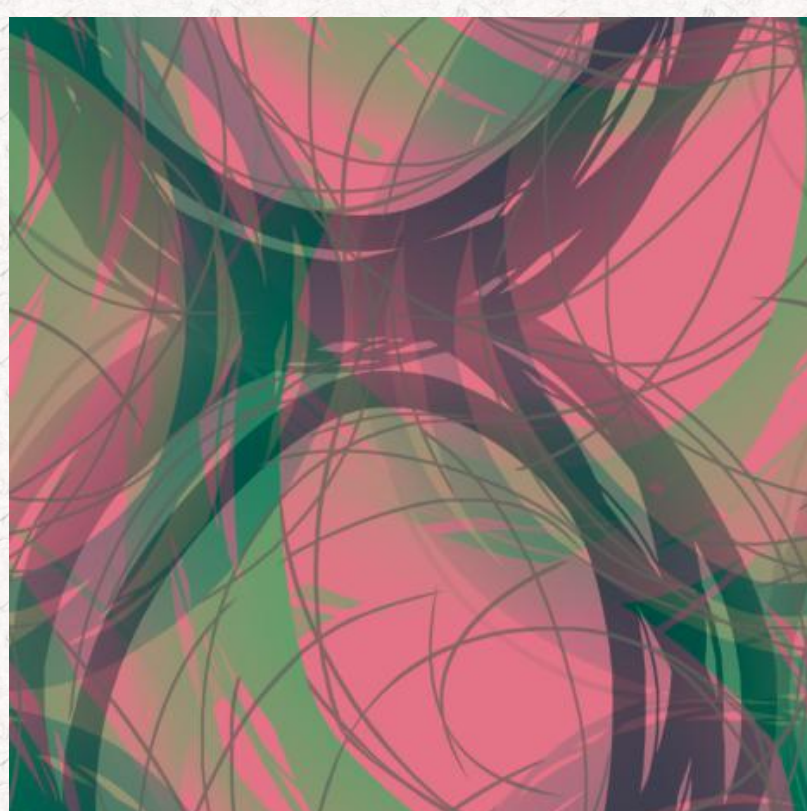
## TURKISH KRAFT

ELEGANCE IS COMING OUT NOT ONLY WHEN FEMININE ELEMENTS SUCH AS TONE-DOWN PINK OR GOLD COLOR,ETC. ARE MIXED.ELEGANCE IS MELTED IN A CLASSICAL ITEM WITH A SIMPLE DESIGN AND CLEAR LINE,AND IT HAPPENS FINGER-MARKED VINTAGES WOULD RATHER CREATE IN-DEPTH ELEGANCE.

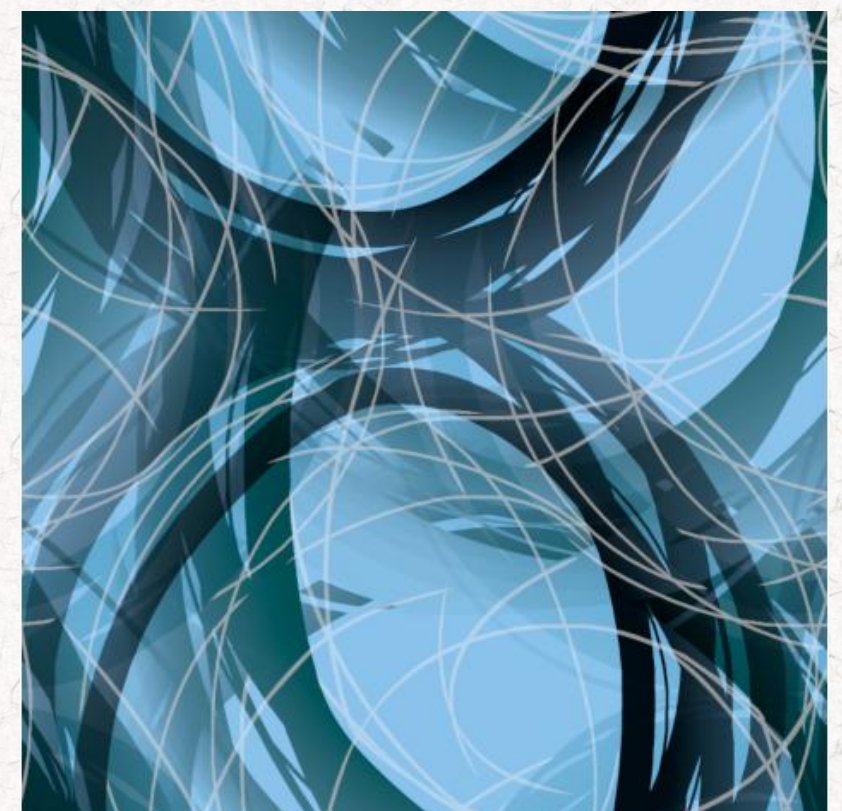
MADE BY TURKISH DESIGNER' S



41050



41049



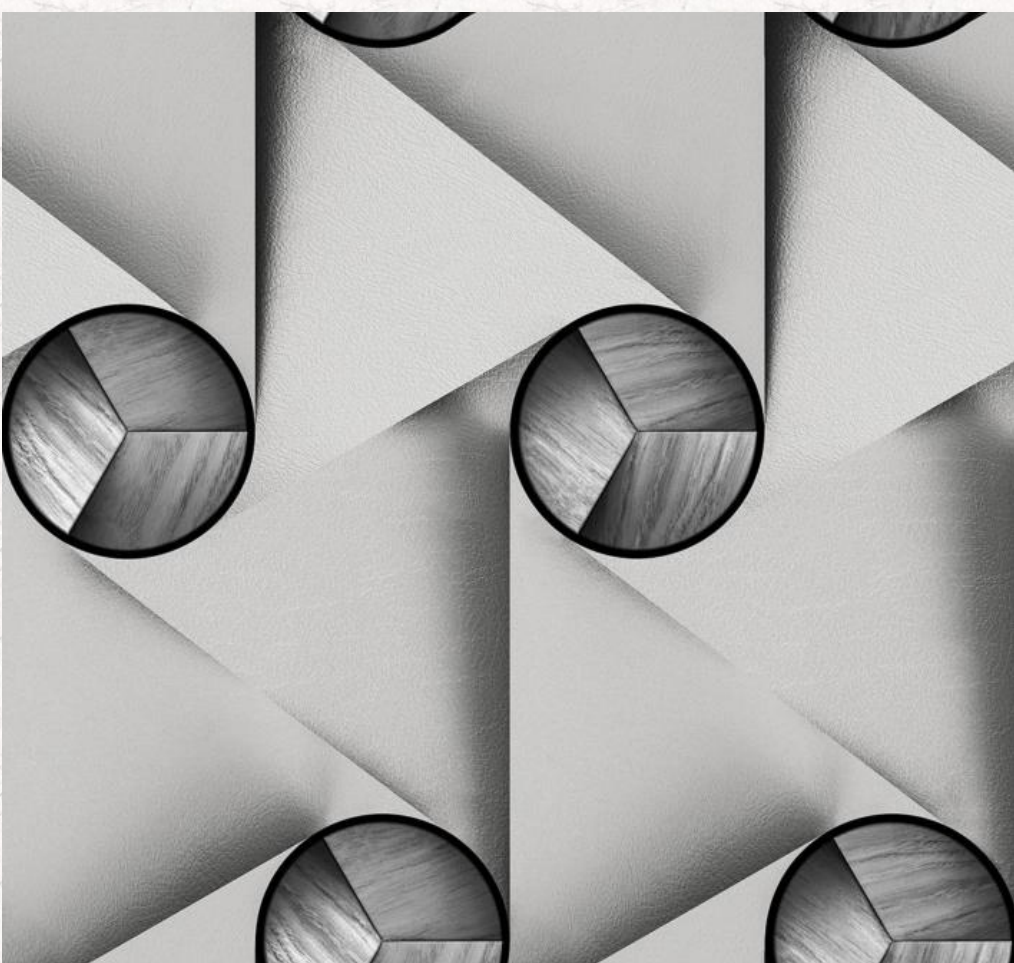
41051



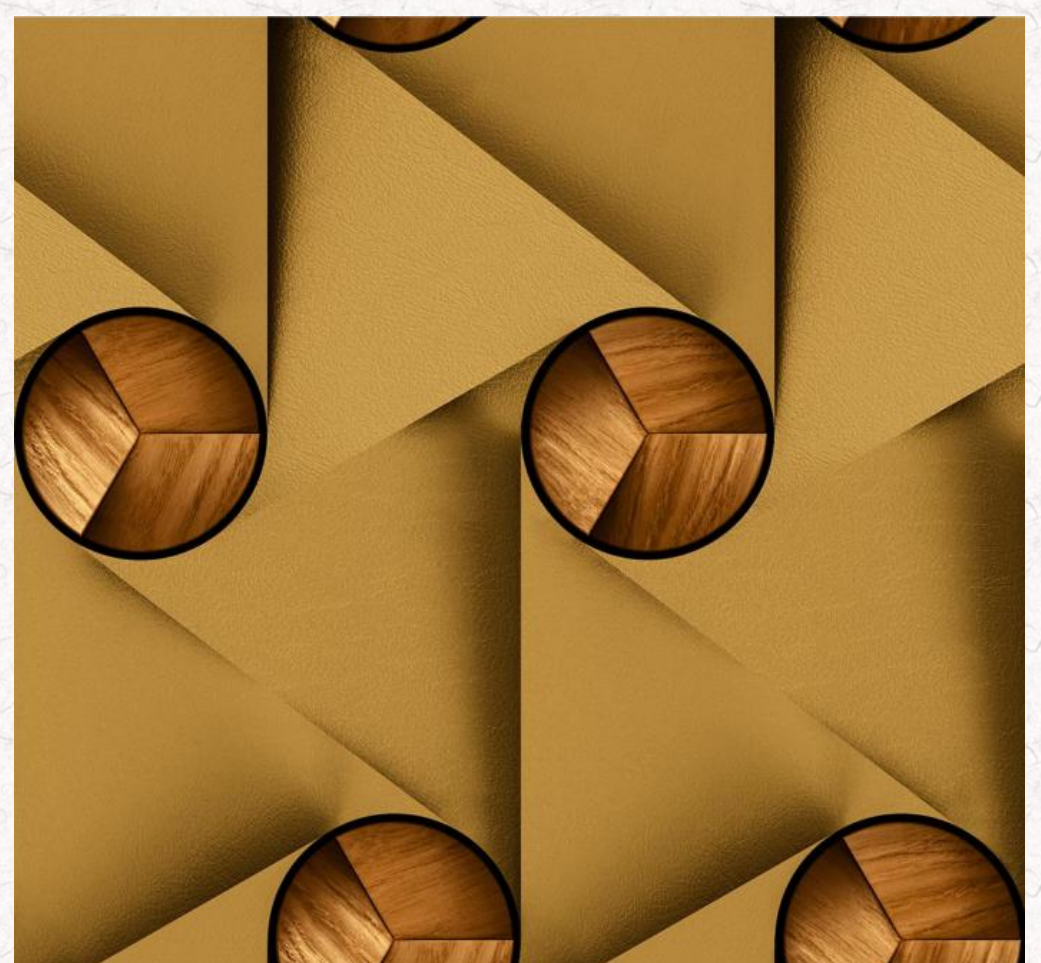
## TURKISH KRAFT

ELEGANCE IS COMING OUT NOT ONLY WHEN FEMININE ELEMENTS SUCH AS TONE-DOWN PINK OR GOLD COLOR, ETC. ARE MIXED. ELEGANCE IS MELTED IN A CLASSICAL ITEM WITH A SIMPLE DESIGN AND CLEAR LINE, AND IT HAPPENS FINGER-MARKED VINTAGES WOULD RATHER CREATE IN-DEPTH ELEGANCE.

MADE BY TURKISH DESIGNER' S



41053



41052



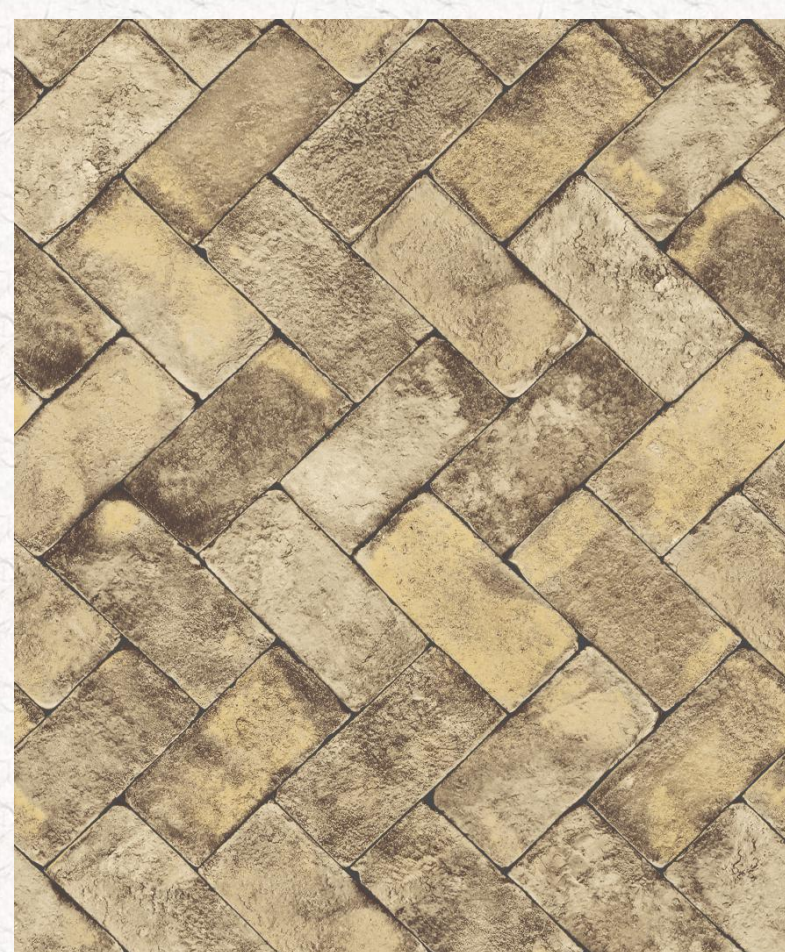
## TURKISH KRAFT

ELEGANCE IS COMING OUT NOT ONLY WHEN FEMININE ELEMENTS SUCH AS TONE-DOWN PINK OR GOLD COLOR,ETC. ARE MIXED.ELEGANCE IS MELTED IN A CLASSICAL ITEM WITH A SIMPLE DESIGN AND CLEAR LINE,AND IT HAPPENS FINGER-MARKED VINTAGES WOULD RATHER CREATE IN-DEPTH ELEGANCE.

MADE BY TURKISH DESIGNER' S



41056



41054





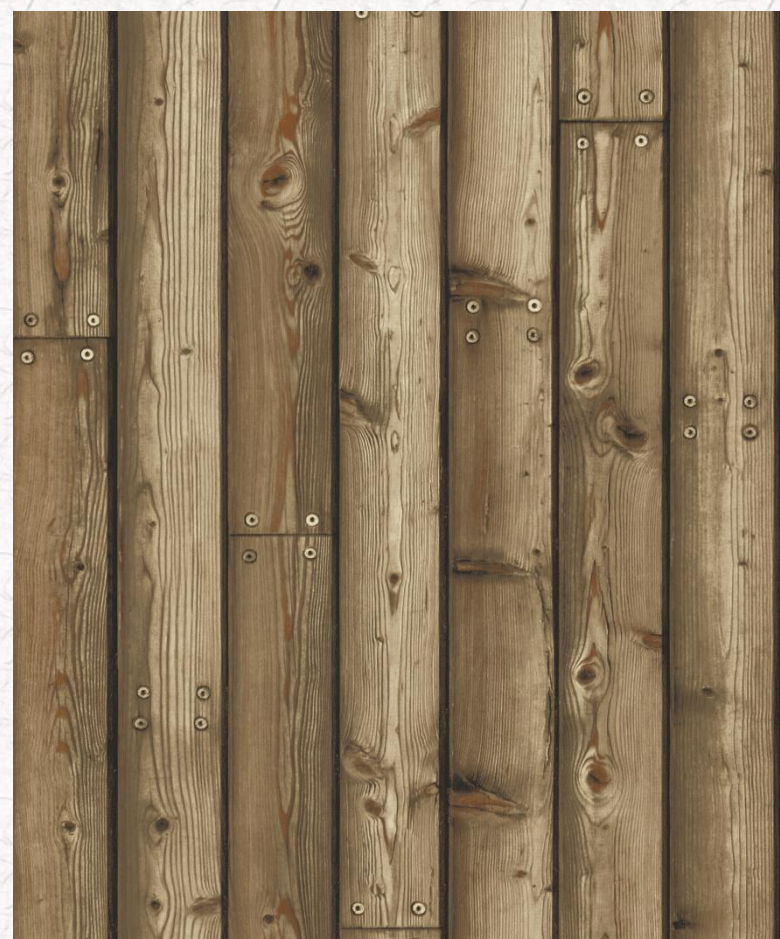
## TURKISH KRAFT

ELEGANCE IS COMING OUT NOT ONLY WHEN FEMININE ELEMENTS SUCH AS TONE-DOWN PINK OR GOLD COLOR,ETC. ARE MIXED.ELEGANCE IS MELTED IN A CLASSICAL ITEM WITH A SIMPLE DESIGN AND CLEAR LINE,AND IT HAPPENS FINGER-MARKED VINTAGES WOULD RATHER CREATE IN-DEPTH ELEGANCE.

MADE BY TURKISH DESIGNER' S



41057



41055



## TURKISH KRAFT

ELEGANCE IS COMING OUT NOT ONLY WHEN FEMININE ELEMENTS SUCH AS TONE-DOWN PINK OR GOLD COLOR,ETC. ARE MIXED.ELEGANCE IS MELTED IN A CLASSICAL ITEM WITH A SIMPLE DESIGN AND CLEAR LINE,AND IT HAPPENS FINGER-MARKED VINTAGES WOULD RATHER CREATE IN-DEPTH ELEGANCE.

MADE BY TURKISH DESIGNER' S



41060



## **TURKISH KRAFT**

**ELEGANCE IS COMING OUT NOT ONLY WHEN FEMININE ELEMENTS SUCH AS TONE-DOWN PINK OR GOLD COLOR,ETC. ARE MIXED.ELEGANCE IS MELTED IN A CLASSICAL ITEM WITH A SIMPLE DESIGN AND CLEAR LINE,AND IT HAPPENS FINGER-MARKED VINTAGES WOULD RATHER CREATE IN-DEPTH ELEGANCE.**

**MADE BY 'TURKISH DESIGNER' S**



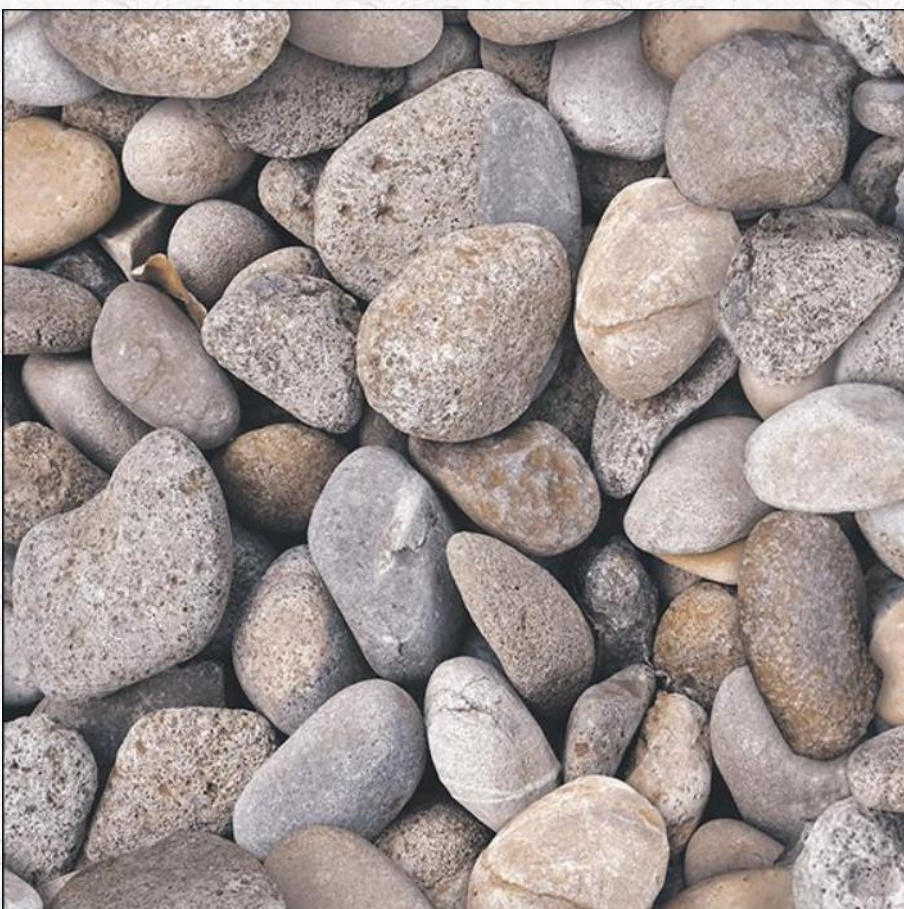
**41059**



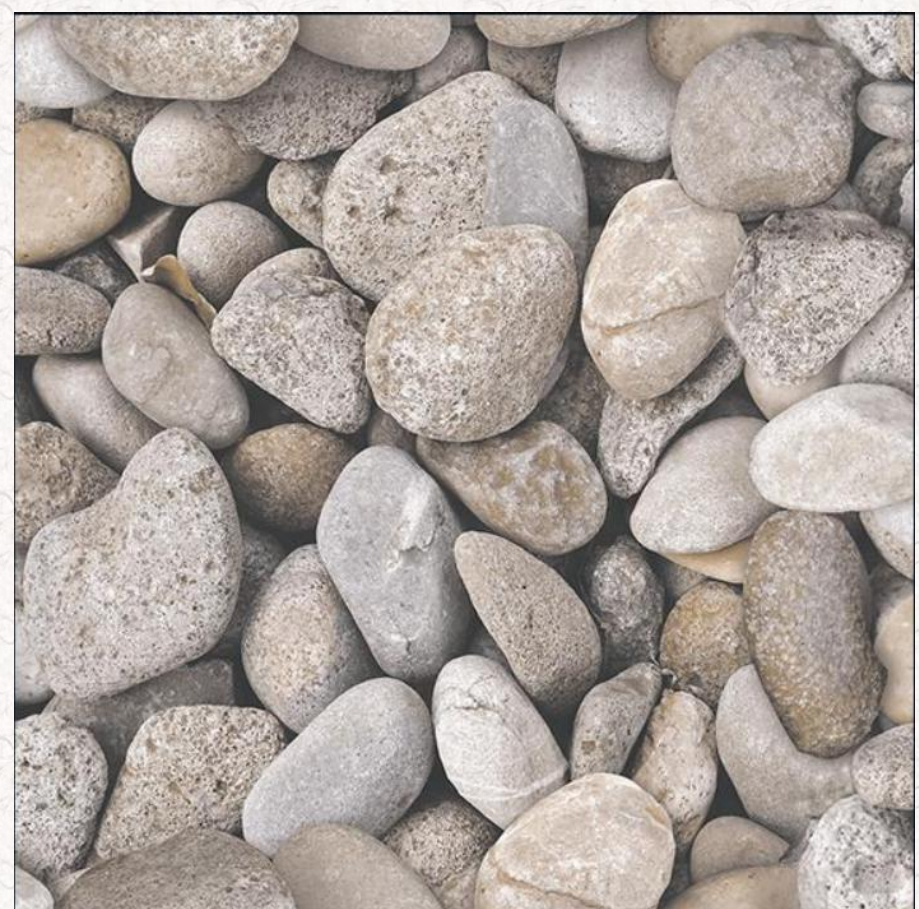
## TURKISH KRAFT

ELEGANCE IS COMING OUT NOT ONLY WHEN FEMININE ELEMENTS SUCH AS TONE-DOWN PINK OR GOLD COLOR, ETC. ARE MIXED. ELEGANCE IS MELTED IN A CLASSICAL ITEM WITH A SIMPLE DESIGN AND CLEAR LINE, AND IT HAPPENS FINGER-MARKED VINTAGES WOULD RATHER CREATE IN-DEPTH ELEGANCE.

MADE BY TURKISH DESIGNER' S



IT2-202



IT2-203



## TURKISH KRAFT

ELEGANCE IS COMING OUT NOT ONLY WHEN FEMININE ELEMENTS SUCH AS TONE-DOWN PINK OR GOLD COLOR,ETC. ARE MIXED.ELEGANCE IS MELTED IN A CLASSICAL ITEM WITH A SIMPLE DESIGN AND CLEAR LINE,AND IT HAPPENS FINGER-MARKED VINTAGES WOULD RATHER CREATE IN-DEPTH ELEGANCE.

MADE BY TURKISH DESIGNER' S



41061

## TURKISH KRAFT

ELEGANCE IS COMING OUT NOT ONLY WHEN FEMININE ELEMENTS SUCH AS TONE-DOWN PINK OR GOLD COLOR,ETC. ARE MIXED.ELEGANCE IS MELTED IN A CLASSICAL ITEM WITH A SIMPLE DESIGN AND CLEAR LINE,AND IT HAPPENS FINGER-MARKED VINTAGES WOULD RATHER CREATE IN-DEPTH ELEGANCE.

MADE BY TURKISH DESIGNER' S



41039



41041